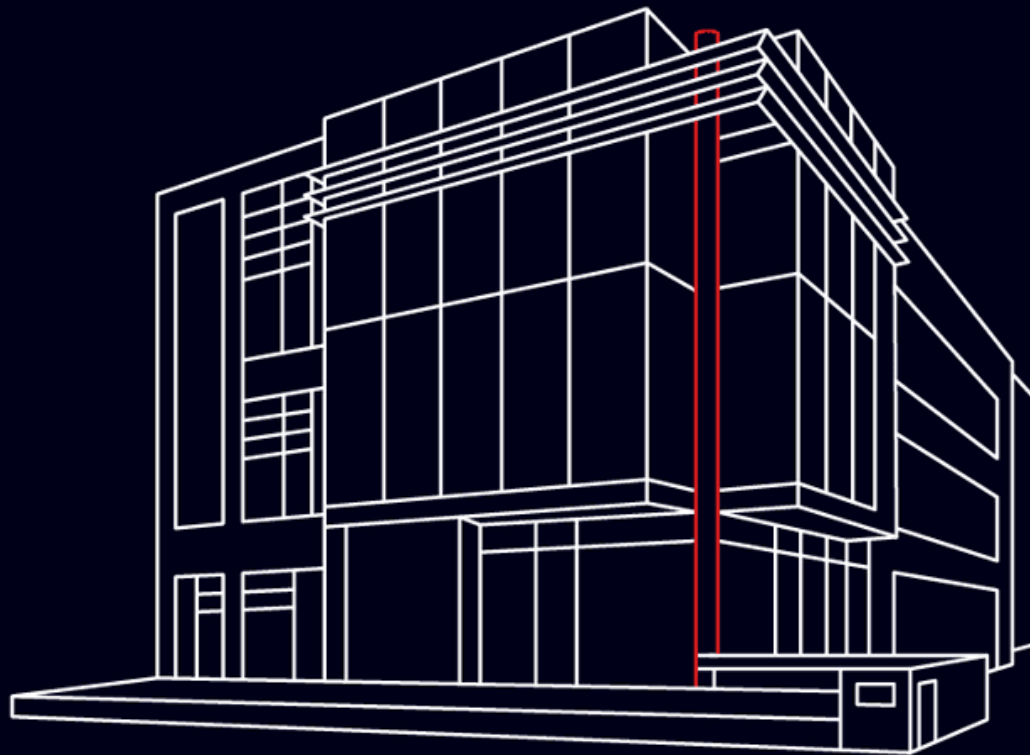

Global Relay Data Center

Built for resilience and sustainability





Green

Drives sustainable SaaS with minimal carbon footprint.



Fast

Unrivaled speed and efficiency in data archiving and retrieval.



Secure

Encryption at rest, and in transit.



Resilient

Designed for zero downtime, and it's earthquake proof.



AI Ready

Architected for an AI-powered future.



Global Relay's state-of-the-art, owned and operated, green data center is custom-built to serve the regulatory, security and performance needs of the financial services industry.

An achievement born of a \$60M+ capital investment, the cutting-edge facility powers Global Relay's fully integrated, end-to-end compliance solutions. It serves businesses operating in some of the most heavily regulated industries, including 22 of the top 25 banks in the world.

Explore what makes our data center unique and special.

Drives sustainable SaaS with minimal carbon footprint



Green



Fast



Secure



Resilient



AI Ready

Global Relay's data center is a model of environmental responsibility, designed to minimize its carbon footprint. Through innovative technologies such as free air cooling, evaporative cooling, and reliance on clean hydroelectric energy, we have eliminated the need for traditional, energy-intensive cooling methods. Our data center operates without coal-powered air conditioning and achieves minimal carbon emissions, setting a benchmark for sustainable SaaS and data storage.



- **Free Air cooling**
Keeps the data center cool by using outside air, reducing the reliance on mechanical cooling systems.
- **Evaporative cooling**
Uses water blankets to cool air, replacing the need for electricity in hotter climates.
- **Hydroelectric energy**
Powered by clean, renewable energy from BC Hydro.
- **Flywheel UPS system**
Replaces traditional lead-acid batteries, reducing environmental risks and energy waste.
- **Power savings**
Higher efficiency is achieved by using European 400V standards, reducing power loss and resource use.

Unrivaled speed and efficiency in data archiving and retrieval



Green



Fast



Secure



Resilient



AI Ready

Global Relay's data center is designed for speed and scalability. With high-bandwidth fiber connections and proprietary technologies like NoSQL storage, it ensures lightning-fast data processing, even at massive volumes. Customers benefit from sub-two-second search response times and seamless scalability, enabling efficient data management for the world's largest organizations.



- **Virtual 80-gigabit pipes to each switch**

Ensures high data throughput and processing speed.

- **Proprietary NoSQL storage technology**

Supports the massive scalability needed to handle even the largest data sets.

- **Two-second response times for searches**

Rapid data retrieval speeds ensure efficient eDiscovery.

- **Legacy data extraction/import tools**

Capable of migrating hundreds of terabytes quickly and efficiently.

- **Outperforming public cloud solutions**

Successfully migrated an organization archiving approximately 70 million messages/day after they outgrew a public cloud solution.

Uncompromising security for the most sensitive data



Green



Fast



Secure



Resilient



AI Ready

Global Relay's private data center is built with tailored systems architecture and employs a hardware security modules (HSM) for managing encryption keys, offering a superior level of security compared to public cloud environments. By minimizing data transfers and system hops, Global Relay ensures that sensitive information remains secure, reducing the risk of exposure that can occur with traditional cloud services.



- **Hardware Security Module (HSM)**

Generates and manages encryption keys, critical for secure data handling in financial services.

- **Minimal data transfers**

Reduces the risk of breaches by limiting the number of switches and transfers that can create vulnerability.

- **Proven record of security**

Avoids vulnerabilities inherent in public cloud-dependent services, having a track record of preventing breaches, gaps and data loss caused by outages and product changes.

- **Transparent management**

Avoids exposure to hidden policies, procedures and processing fees inherent in competing solutions dependent on large scale infrastructure providers like Amazon, Microsoft and Google.

- **Robust security and data standards**

Fully compliant with all Canadian privacy and security requirements, including those deemed equivalent in protection to GDPR.

Designed for zero downtime, and it's earthquake-proof



Green



Fast



Secure



Resilient



AI Ready

Global Relay's data center is engineered to operate 24/7, ensuring uninterrupted service under any conditions, including earthquakes. With redundant power systems, a mirrored Toronto facility, and a flywheel UPS, the data center can withstand catastrophic events without any downtime. Its design prioritizes both resilience and environmental sustainability, making it robust enough to power through even the harshest conditions.



- **56-hour backup power**

Onsite diesel generators can power the entire facility for 56 hours without refueling in the event of an emergency.

- **Business continuity through mirroring**

The North Vancouver data center is mirrored with a secondary East Coast facility, ensuring no single point of failure.

- **Flywheel UPS**

Kinetic energy storage eliminates the need for traditional batteries, providing uninterrupted power and eco-friendliness.

- **Redundant systems**

The center uses an N+1 configuration with redundant fans and power systems, eliminating downtime risks from overheating or power outages.

- **Proven performance**

Survived power outages of up to 40 hours without going down.

Built for scalable AI



Green



Fast



Secure



Resilient



AI Ready

Global Relay's ownership of its entire data center infrastructure ensures that it can scale seamlessly to meet the evolving demands of the most regulated industries. Unlike competitors limited by public cloud infrastructure constraints, Global Relay can rapidly implement new technologies like AI without impacting capacity, performance, or reliability.

- **Proprietary technology stack**

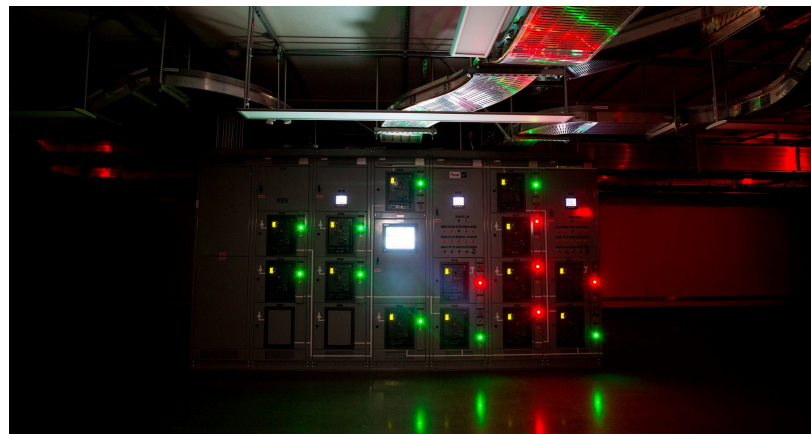
Complete ownership of servers, power, and maintenance allows for quick adaptations to client needs.

- **Efficient AI processing**

Approach to data classification and model optimization allows efficient LLM model implementation and testing, reducing costs and environmental impact.

- **Pivot capacity**

Able to pivot to address new industry requirements or respond to new client demands, demonstrating a level of flexibility that solutions dependent on large scale public clouds struggle to match.



Global Relay's data center helps its clients avoid the performance pitfalls, security risks and hidden fees inherent in competing solutions that employ 'one-size-fits-all' large infrastructure providers such as Amazon, Microsoft and Google.

Customers value its resilience and celebrate the fact that it is ecologically responsible.



About Global Relay

Global Relay is the leading provider of cloud electronic communications archiving, messaging, supervision, and eDiscovery solutions for the global financial sector and other highly regulated industries. Global Relay's integrated compliance solutions enable regulated organizations to meet collaboration, privacy, and security requirements.

For more information about Global Relay:

Visit globalrelay.com

Call **+1 866 484 6630**

Email info@globalrelay.net

Copyright © 1999-2025 Global Relay Communications Inc. Confidential & Proprietary.

All Rights Reserved. Not to be reproduced or distributed without permission.

All trademarks are the property of their respective owners. No implication of endorsement by or affiliation with these third parties is intended.

